

Palm Springs American Legion Owen Coffman Post 519

Preservation Plan: proposed design and phasing



PALM SPRINGS
PRESERVATION
FOUNDATION[®]





Restoring the original simplicity of the building



Phase 1:

- Site work.
- Exterior of Building.
- Auditorium Remodel.

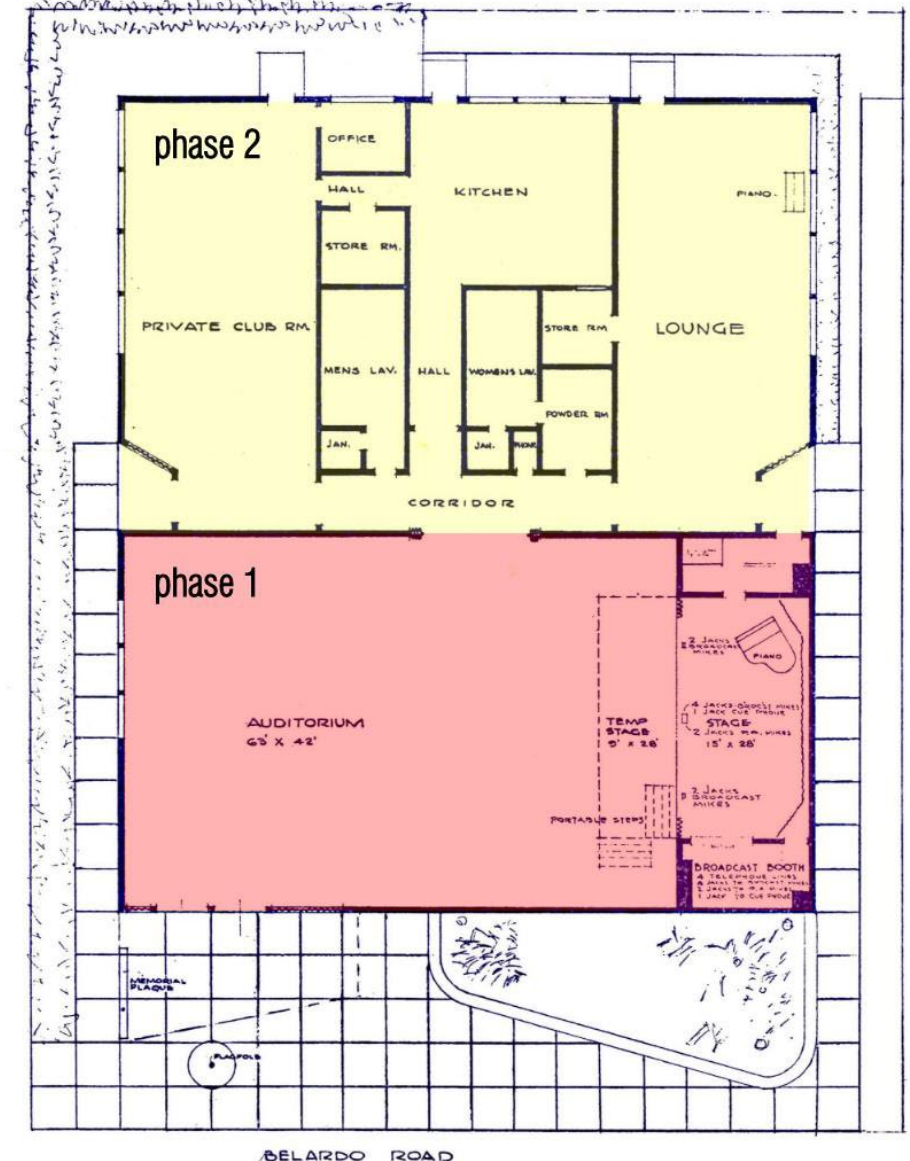
Bar is closed at Auditorium and is utilized at Club Room.
Kitchen and Restrooms remain operational.

Phase 2:

- Auditorium Remodel is complete.
- Exterior Remodel is complete.
- Strategic Remodel of remainder of building, sequencing work of kitchen and restrooms.

Hold Your Convention, Broadcast, Dance or Meeting Here

The entire Wars Memorial Building is designed to serve adequately as a location for public meetings, dances, radio broadcasts or exhibitions. The Auditorium has an excellent parquet floor—one of the finest dance floors in Southern California. A large stage was engineered for radio broadcasts at the time of construction, with an excellent sound-proof control room being installed under supervision of NBC and CBS radio engineers. National broadcasts by such stars as Bob Hope, Jack Benny and Al Jolson. A fully-equipped kitchen is available for banquets and dinner meetings. Also, a smaller committee room is provided. Communicate with business agent, Owen Coffman Post, American Legion, 400 North Belardo Road, Palm Springs, California.



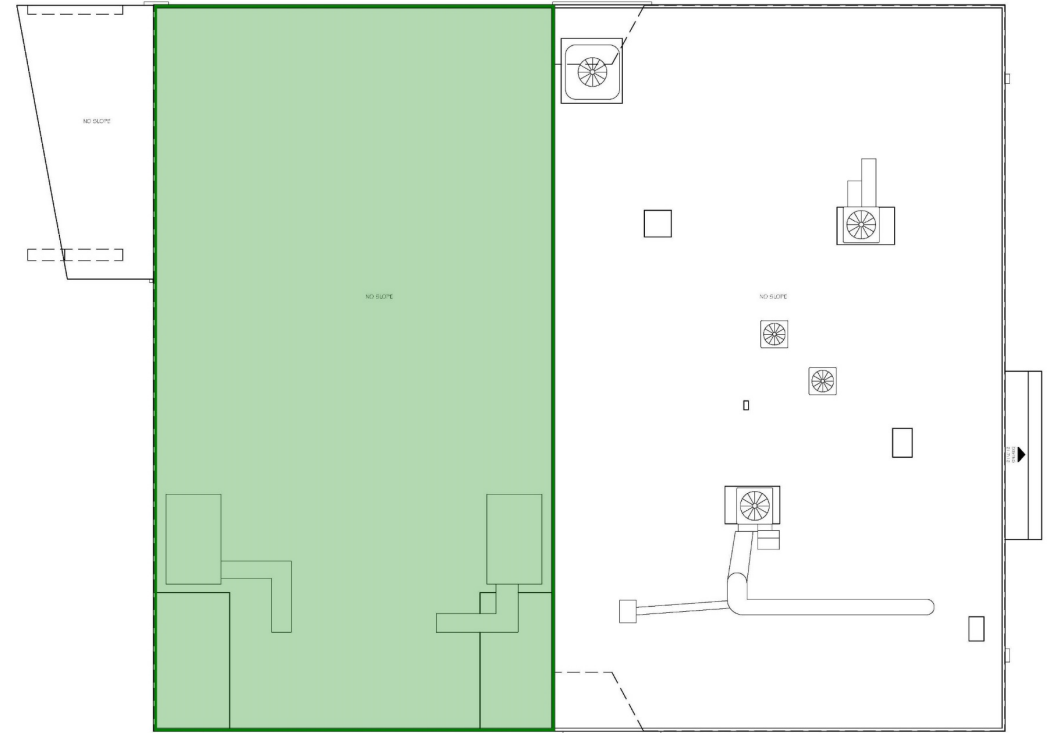
Phase 1 – Site Plan

- Clean and repair concrete parking area.
- Add carport with solar panels (requested by Garth Gilpin)
- remove rail at front entry.
- Repair and paint all elevations.
- Remove wall at entry per original elevations to expose pipe column.
- Build freestanding wall and canopy at north entry. New patio and landscape.
- relocate and display honor plaques on north side of building.



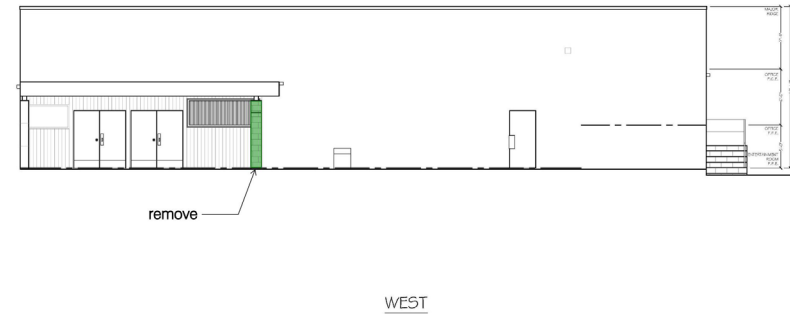
Phase 1 – Roof Plan

- Replace roof and possibly HVAC units.
- Add insulation to protect interior lamella structure from exposure.



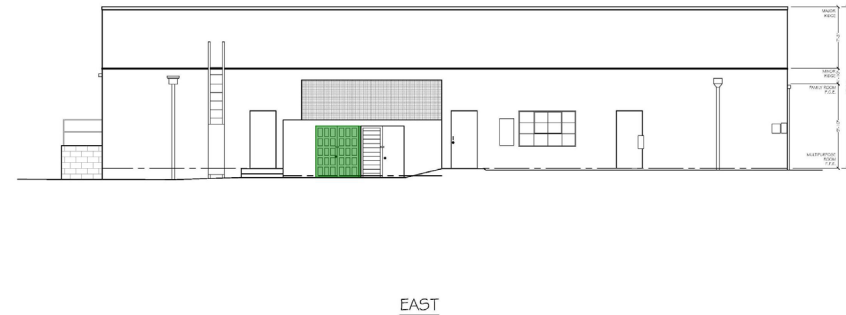
Front + South elevations

- Remove wall at front entry
- Pipe column exposed.
- Remove and replace signage.
- Remove and replace landscape.
- Repair windows.
- Patch and paint.



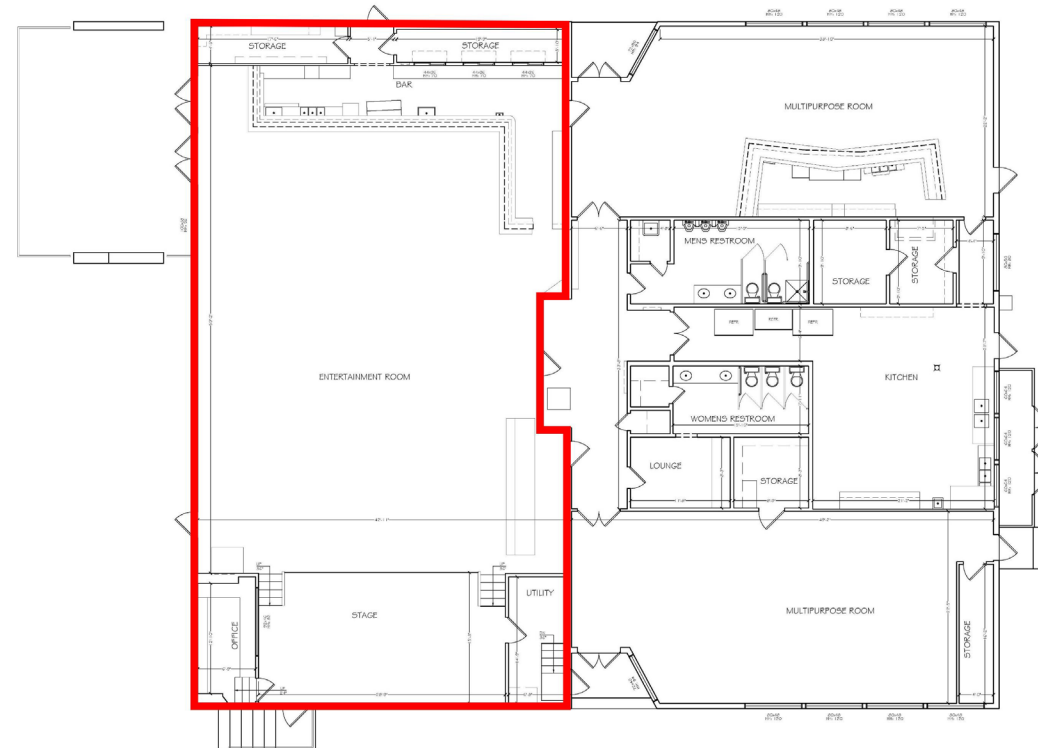
Rear and east elevations

- Remove railing.
- Repair windows.
- Patch and paint.
- Replace doors at rear elevation.



Phase 1 – Floor Plan

- Auditorium Remodel.
- Patrons utilize bar in back room.
- Restore or reconstruct original parquet floor.
- Remove T-bar ceiling and expose lamella structure.
- Patch and paint walls.
- Remodel existing bar.



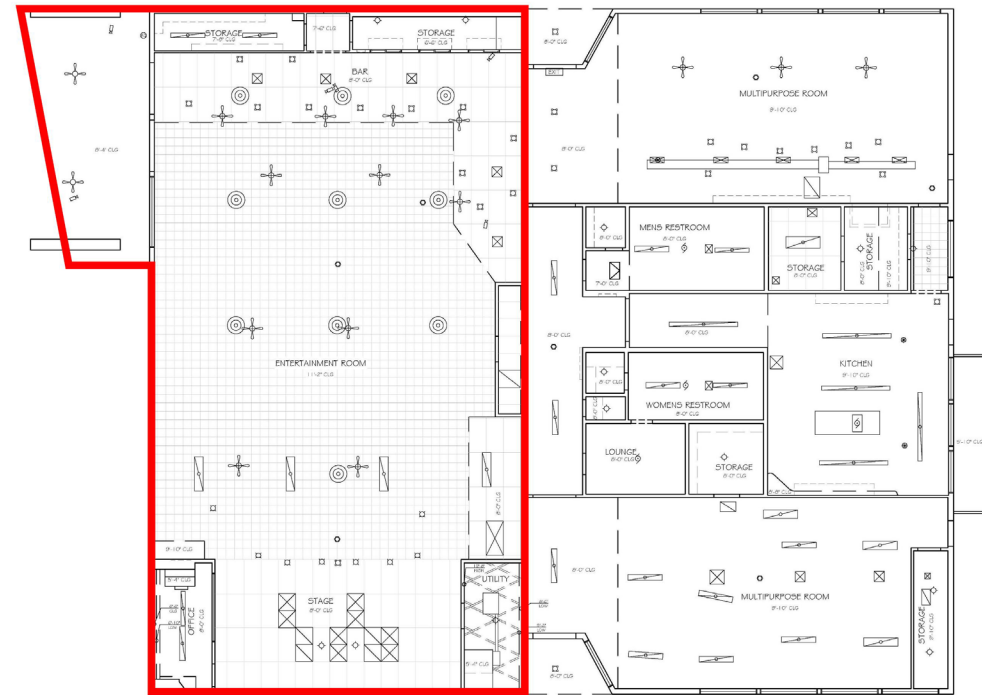
1st FLOOR





Phase 1 – reflected ceiling plan

- Remove T-bar ceiling in auditorium and expose lamella structure.
- Repair and finish lamella structure.
- Rework HVAC ductwork.
- New lighting.
- New fans.
- New canopy above the bar.



1st FLOOR



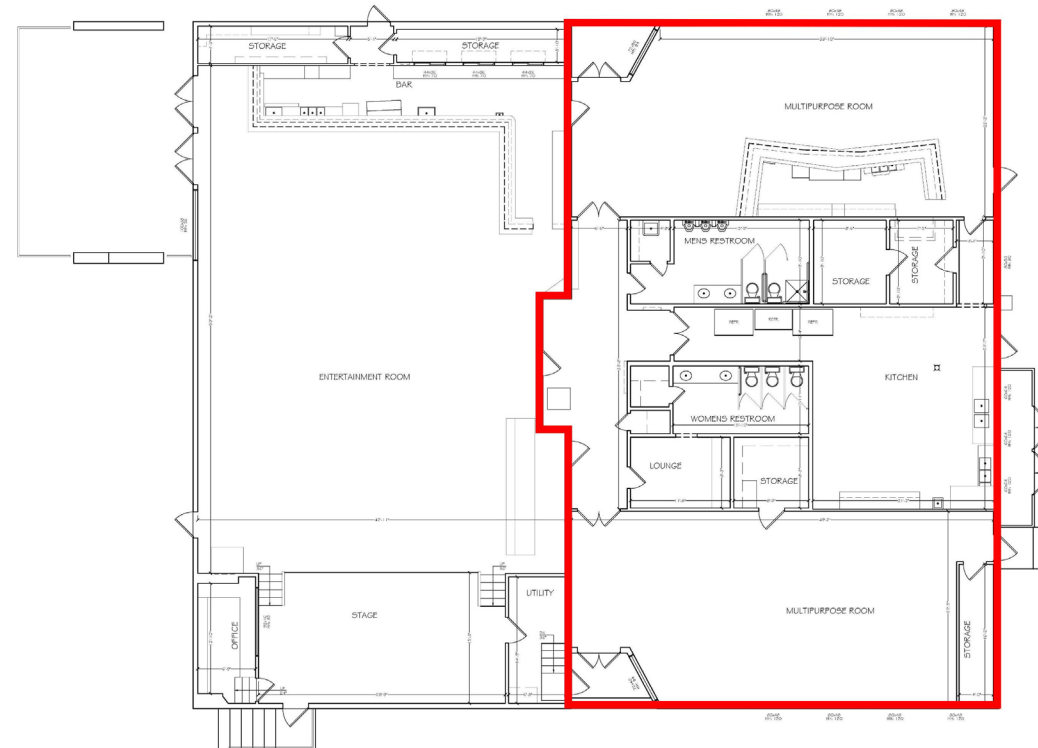






Phase 2 – floor plan

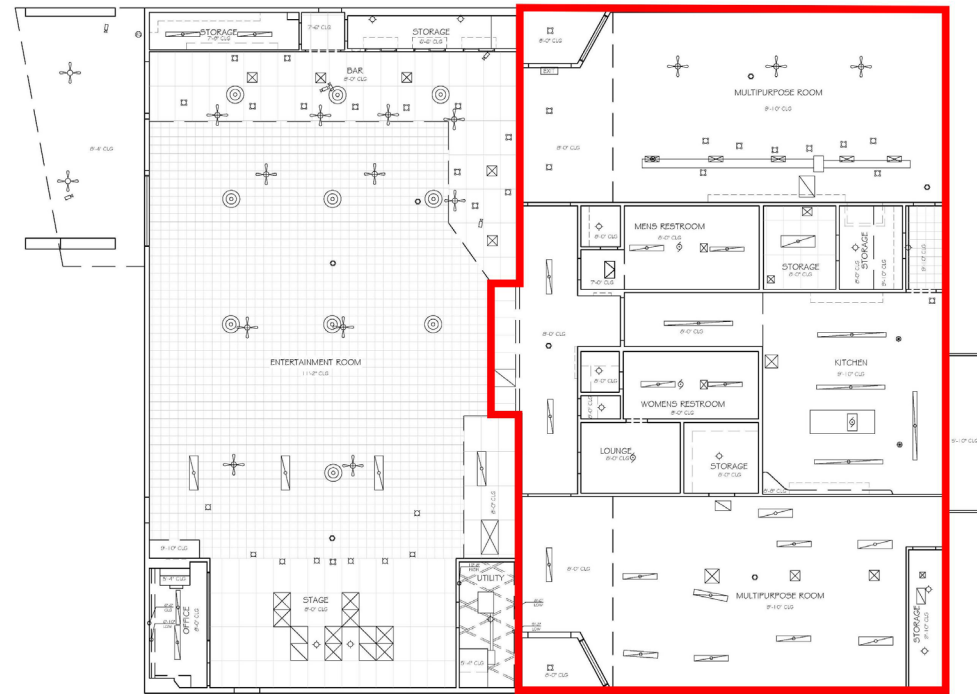
- Restore original bar, fixtures and furnishings to period of significance.
- Remodel restrooms.
- Remodel kitchen.
- Remodel original lounge (multi-purpose room).



1st FLOOR

Phase 2 – reflected ceiling plan

- Restore original finishes throughout.
- New period lighting.



1st FLOOR





